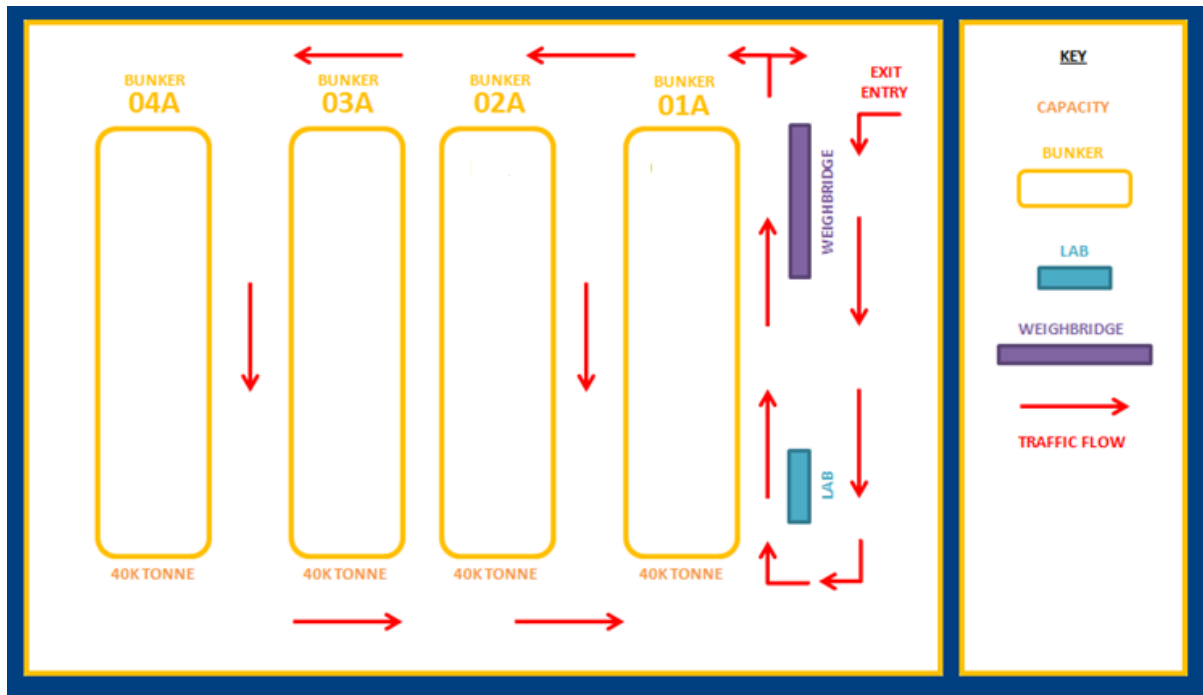


## BUNGE ARTHUR RIVER SITE RECEIVAL & SAFETY INFORMATION

Truck drivers, please read through this safety and operational information carefully to ensure you have a safe and efficient visit to our site.

### Traffic Flow Path for Arthur River



### Sampling Station

The sampling lab is the first location you are required to visit when delivering a load of grain. The sampling lab has dual sampling probes so, when positioned correctly, your front and back trailer can be speared simultaneously. Sampling staff can guide you into the correct position for spearing via 2 way channel 17.

To ensure a safe and efficient sampling process follows these steps:

- Ensure your 2-way is switched to channel 17 (the site operations channel) and the volume is turned up before arriving at the sample lab.
- Ensure your Grain Delivery Document is completed correctly and is left on the sampling platform when arriving at the sampling lab.
- Never move your truck while the spears are in operation.
- When spearing is completed move your truck forward to allow enough space for the next truck in line to get into spearing position.
- Growers bringing in hat samples please be aware that during busy periods you will be required to wait your turn in the queue.

- To move the flow of traffic through the sampling area safely and efficiently Bunge asks that during busy periods you do not do up your tarps whilst at the sampling or weighbridge area.
- NOTE that the left hand spearing side has dual lanes in which vehicles that have unloaded will be driving past on the left hand side to tare out on the weighbridge ahead, please take extra precaution to look out for oncoming traffic using this lane when moving around your vehicle.

## Weigh-Bridge

The weighbridge onsite is un-manned and requires that you scan an RFID card provided to you at the sampling hut, in order for you to collect your weights.

- Never drive onto the bridge until it is displaying a **green light** and the weight reads 0.0. Always allow enough time for the bridge to tare back to 0.00 after the previous truck has left.

### Process for Capturing Your Weights

1. Approach the bridge when the light on the weight display panel is showing **solid green** and the weight reads 0.0.
2. Position your driver's side window so it aligns with, and is within easy reach to, the small black scan box and display/touch screen.
3. Scan your card on the black scan box. You will notice the light on the weights display screen change to **solid red**. This means that the scan has worked and the computer is processing your weight.
4. Wait until the solid red light on the weight display screen changes to **flashing green**. A flashing green light means that the computer has collected your weight and you must now complete the process by pressing one of the **GREEN ACCEPT** buttons on the side of the panel, once hitting this button the light will change back to solid green indicating that you have completed the process.
  - Gross weight: After pressing the accept button and receiving a solid green light you may leave the bridge and drive to allocated stacker to unload your vehicle.
  - Tare Weight: After pressing the accept button and receiving a solid green light you must collect x2 dockets that the computer will print out, containing your load sample results and weights. You must then return your RFID card to the 'CARD RETURN CHUTE' located 3 meters ahead on your right. You are then free to leave site.

If you require assistance whilst using the weighbridge call the sampling lab via 2-way channel 17 or the Sample Lab mobile on 0437 444 950.

## **Safety Introduction**

At Bunge, safety is our number one priority, not production or profit. Improving safety and creating zero-incident culture starts with a commitment from each of us. The following will outline important site operational and safety information that you will need to know before arriving. We ask for your cooperation and participation in all aspects of safety on site, and we will continue to provide a safe and efficient work place.

## **Road Safety**

When on Bunge receival sites normal road rules apply. Wear your seatbelt; never use your mobile phone when driving and follow all sign posted speed limits and road signage. Ensure you understand the traffic flow on the site you are delivering to, and follow it accordingly, if you are unsure ask.

- Note: the speed limits on site must **never** exceed 30km per hour. When driving past the sampling lab the speed should be no greater than 10km per hour.

## **Pedestrians**

Employees and other drivers are often required to work within close proximity of your vehicle and as a driver it is your responsibility to watch for pedestrians. Please be observant at all times when moving your vehicle. Pedestrians have right of way.

## **Passengers**

Due to the high frequency of heavy vehicles moving throughout site we require all passengers, including children to remain inside the vehicle at all times.

## **Alcohol and Drugs**

It is illegal & dangerous to operate a vehicle under the influence of illicit drugs and/or alcohol and Bunge has a zero tolerance policy.

## **Smoking**

There are designated smoking areas on the site, if you are unsure where they are ask a site employee. Smoking anywhere else onsite including inside your vehicle is strictly prohibited.

## **Hazardous Conditions**

Take extra care when operating at night. Ensure you are wearing high visibility clothing with light reflecting strips. During strong winds and electrical storms you should not work outside and Bunge employees may not attend to your delivery until the weather conditions improve.

**Fumigation**

Chemicals used for the fumigation of grain on the Bunge site can be lethal to humans if exposed. Under no circumstance should you enter a taped off and signed fumigation area.

**PPE**

On a grain delivery site you will be exposed to grain dust & chaff, noise, sun, mobile equipment and machinery. These exposures increase a person’s risk of obtaining an injury or illness. Bunge recognizes that the wearing of PPE significantly decreases these risks and therefore enforces the below PPE Policy.

Bunge will provide disposable ear plugs, clear safety eyewear and dust masks at your request. Bunge may refuse any person who does not adhere to site PPE rules.

<b>PPE</b>	<b>Description</b>	<b>Requirement</b>
High Visibility Clothing	A green, yellow or orange vest, shirt or jacket. If delivering at night, high visibility clothing with light reflecting strips is required. High visibility clothing must be worn so it is visible at all times and done up to prevent from catching.	Mandatory
Safety Footwear	Fully enclosed, sturdy work boots, or shoes, worn correctly.	Mandatory
Eye Protection	Includes well fitting safety-rated glasses (tinted and clear), and/or safety rated goggles.	Mandatory
Industrial Safety Helmet	The Bunge Port Authority requires industrial safety helmets to be worn at all times when outside at the Bunge Bunbury Terminal.	Mandatory
Hearing protection	Hearing protection including ear plugs or ear muffs should be worn during grain unloading or at any other time you may be exposed to high levels of noise.	Advised
Dust mask	A dust mask should be worn in any areas in which you will be exposed to grain dust.	Advised
Sun protection	Protection against the sun is proven to decrease the risk of skin cancer. Bunge advises to wear a long sleeve shirt, and pants, UV eye protection, a full brim hat and sunscreen.	Advised
Gloves	Work gloves to protect hands when opening and closing tarps and tailgates are advised.	Advised

## Tailgate Policy

Due to the high safety risks associated with the opening and closing of tailgates, and working in close proximity to moving vehicles, Bunge employees are **not permitted** to open or close **any** truck trail gates. Opening and closing of tailgates is left to the responsibility of



of the driver. Drivers should take caution and stand in a safe position to avoid the potential release of hazardous energy when opening their tailgates (refer to images). All tailgates must be fitted with appropriately fitted safety chains. Bunge will refuse the unloading of any vehicle that does not meet this requirement.

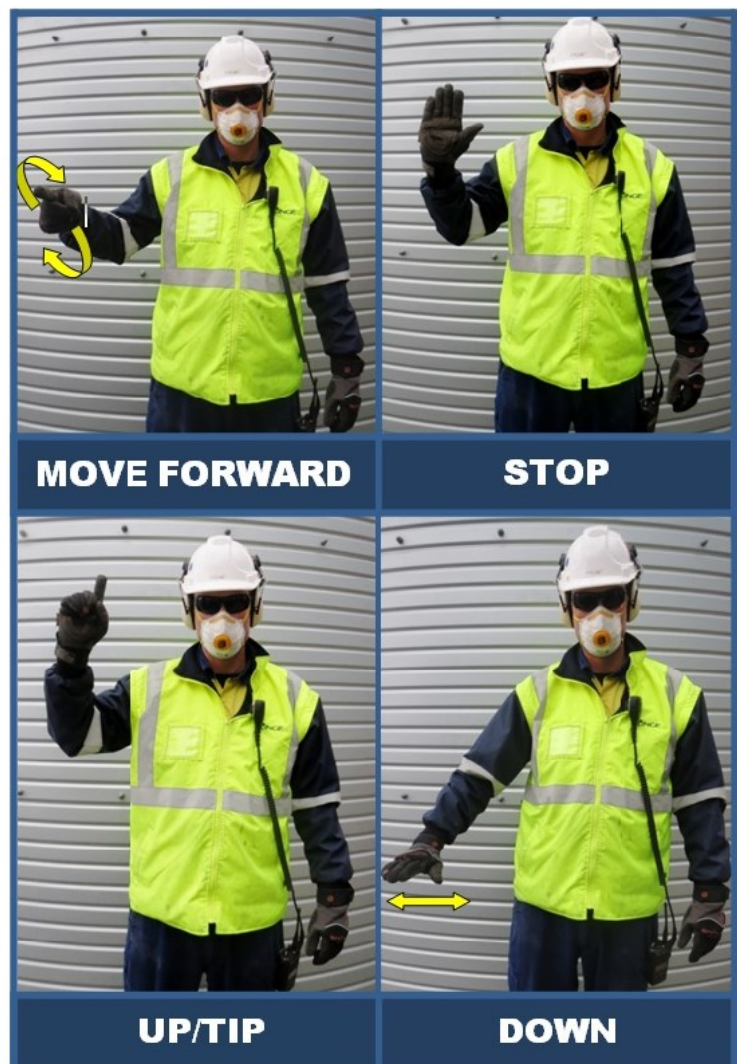
## Grid Protocols

When approaching the grids to unload your vehicle locate the grid operator. The grid operator is the person in charge of the unloading process and will guide you using specific hand signals. It is **crucial** that you follow the grid operators instructions at **all** times. Grid operators are required to work in close proximity to your vehicle.

**Never** move your vehicle unless the grid operator gives you clear instruction to do so and you have confirmed they are located in a safe area.

Ensure you are familiar with the hand signals used by the Grid Operators on all Bunge sites (see right). If you are unsure get clarification from grid operator prior to unloading.

Furthermore, all grid operators will



be equipped with 2-way radios and can be contacted on the sites UHF channel **17**.

### **Incident Reporting**

In order to improve safety and operations on our sites it is vital that **all** hazards, incidents, accidents and/or near misses that occur on site are reported. The Bunge incident reporting process is quick and easy and should be carried out as soon as possible. Talk to a Bunge employee if you need to report an incident or if you would like to provide feedback on how safety or operations can be improved on site. Incident report forms can be located in the sampling lab and site office.