

Harvest Mass Management Scheme: A Guide to Safe Road Access During 2017-18 Harvest Season

To facilitate the transport of grain during the 2017-18 harvest season period, Main Roads Heavy Vehicle Services (HVS) has approved the continuation of the special access arrangements under the Harvest Mass Management Scheme (HMMS).

The Special Access Arrangements:

The special access arrangements allow Restricted Access Vehicles (RAVs) combinations to safely access paddocks on roads that have not been approved on the respective RAV Networks, provided:

- The road/s are being used to transport grain from a paddock to a grain receiver or return;
- The road/s are the most direct route from the paddock to the nearest road approved for RAV access;
- Transport operators must adhere to the access conditions outlined in the HMMS Business Rules; and
- The RAV category is the same or lower than the nearest RAV network - for example, a RAV Category 7 vehicle can be used, but only if the nearest RAV network road to the paddock is Network 7 or higher.

What driver and vehicle conditions apply when operating under HMMS?

A key consideration for operators partaking in the HMMS is road safety. To support this, the following conditions apply to vehicles and drivers:

Road Widths and Intersections

RAV combinations require greater road widths when travelling and not all roads are of an appropriate width to provide appropriate safety margins.



In order to mitigate any associated risks, the operator is required to:

- Display an amber flashing warning light on the prime mover.
- Drive at a maximum speed of 40km/h.
- Check the route prior to commencing travel to ensure it is suitable for the type of RAV being used.

Gradients

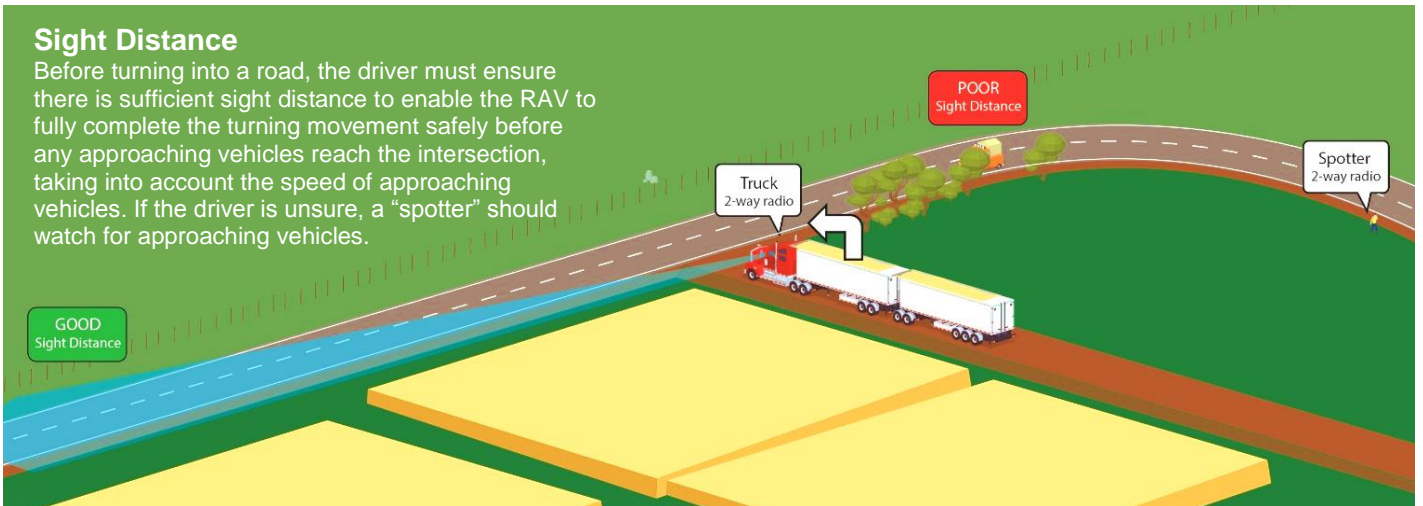
A RAV has a higher gross mass than standard vehicles. In order to mitigate any associated risks, the driver must exercise special attention to:

- Selecting an appropriate low gear for the gradient and load.
- Maintain a safe speed.
- Ensure auxiliary braking systems are used effectively.



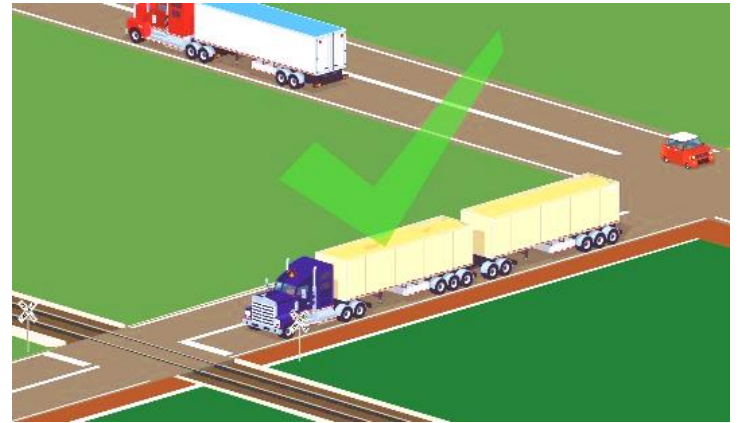
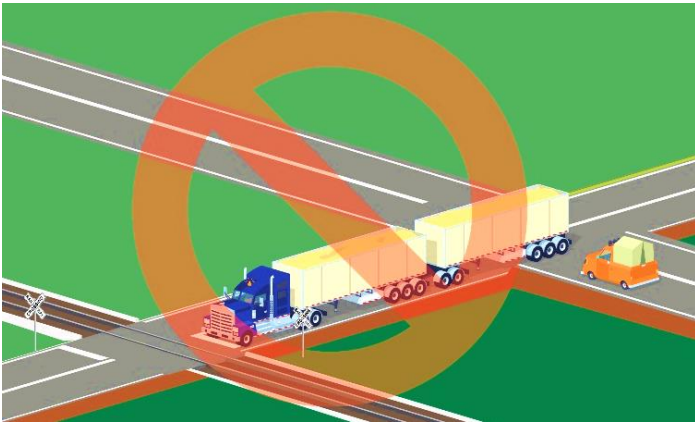
Sight Distance

Before turning into a road, the driver must ensure there is sufficient sight distance to enable the RAV to fully complete the turning movement safely before any approaching vehicles reach the intersection, taking into account the speed of approaching vehicles. If the driver is unsure, a "spotter" should watch for approaching vehicles.



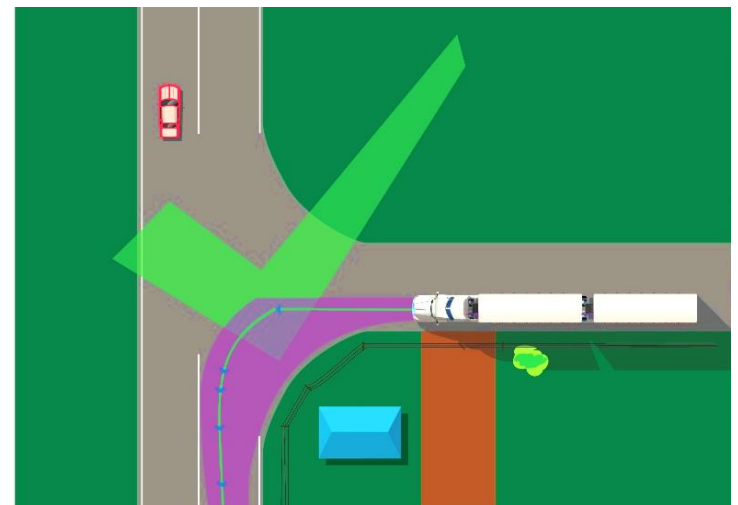
Stacking Distance

- The driver / operator must check the route to ensure any stacking distance between a rail crossing and a nearby intersection is greater than the length of the vehicle:



Swept Path

- The driver must ensure the RAV can safely turn at all intersections without crossing solid white lines or risk interfering with other traffic or roadside infrastructure:



Bridge Crossing

- RAVs must not be driven over any bridge without prior approval from Main Roads, unless the road is on the relevant RAV Network or the driver has a permit approving the bridge crossing.
- If an unapproved bridge is on the route, the driver or operator must contact Main Roads to arrange a bridge assessment.
- Main Roads will conduct a bridge assessment and issue a permit, provided the bridge is suitable.
- For more information on how to apply for a HMMS Bridge Crossing Permit, refer to the HMMS page on the Main Roads website.
- The permit cost is \$25 and the permit will be valid for the harvest season period.

Assistance with Applying Conditions

- Are you unsure of how to interpret or apply the conditions?
- Refer to the *Route Assessment Guidelines* for further details (available in the RAV Network Access section on the Main Roads website:
<https://www.mainroads.wa.gov.au/UsingRoads/HeavyVehicles/ravnetworkaccess/Pages/default.aspx>,
- For assistance with interpreting the *Route Assessment Guidelines*, contact Main Roads Heavy Vehicle Services on 138 486 or by email at hvs@mainroads.wa.gov.au

Future Access Arrangements

While the special access arrangements are available for the 2017-18 harvest season period, it is not the intention for these special arrangements to replace the standard RAV Network access arrangements.

As such, grain transporters using roads that are not approved on the relevant RAV Network to access their respective farms, need to make application to have the road assessed prior to the next harvest season.

It is not guaranteed that the special access arrangements will continue to be available in future years.

Who do these new access provisions apply to?

The HMMS applies only to registered operators and vehicles transporting grain from a paddock to a participating grain receiver.

Participating grain receivers are responsible for ensuring each load accepted into their facility complies with HMMS requirements and ensure operators and drivers are aware of the HMMS Business Rules.

When operating under the HMMS, drivers must carry relevant documentation which must be produced to a Transport Inspector or Police Officer on request.

Need more information?

The purpose of this document is to provide a brief user guide on the new access provisions in the *HMMS Business Rules*. For full details of the provisions, refer to the *HMMS Business Rules*, available on the Main Roads website:

<https://www.mainroads.wa.gov.au/UsingRoads/HeavyVehicles/Pages/HMMS.aspx>

